

Dubuque Parks and Recreation Comprehensive Plan

Draft Executive Summary

February 2026



Y(OUR) STORY

Dubuque
Parks and Recreation
Comprehensive Plan

THE CITY OF
DUBUQUE
Masterpiece on the Mississippi

INTRODUCTION

The Dubuque Comprehensive Parks and Recreation Master Plan’s purpose is to offer strategies that provide guidance in order to meet the needs of current and future City of Dubuque residents. Dubuque city government’s mission is to deliver excellent municipal services that support urban living; contribute to an equitable, sustainable city; plan for the community’s future; and facilitate access to critical human services. The plan defines opportunities, challenges, and recommendations for the next 10 years and beyond. The second phase of community feedback received input on the draft plan from over 360 people.

The theme of the plan is Y(O)ur Story, based on the idea that a well-crafted Comprehensive Parks and Recreation Master Plan tells the story of a city, where we were, where we are, and where we are going. Over the past 8 months, an extensive outreach effort was conducted, including meetings with the community, numerous stakeholder organizations, user groups, and City leaders. In-person opportunities for input were conducted, a statistically-valid survey was administered, and an interactive project-dedicated website collected online feedback. Community participation is critical to the success of the plan and thousands of residents shared their thoughts to craft the collective story of Dubuque Parks and Recreation.

The Master Plan enables the City to continue telling this story and continue engaging in a public process to ensure future parks and recreation priorities and goals are resident driven and meet the community’s evolving demands over the next decade. To tell this story, the plan has been organized around the following goals:

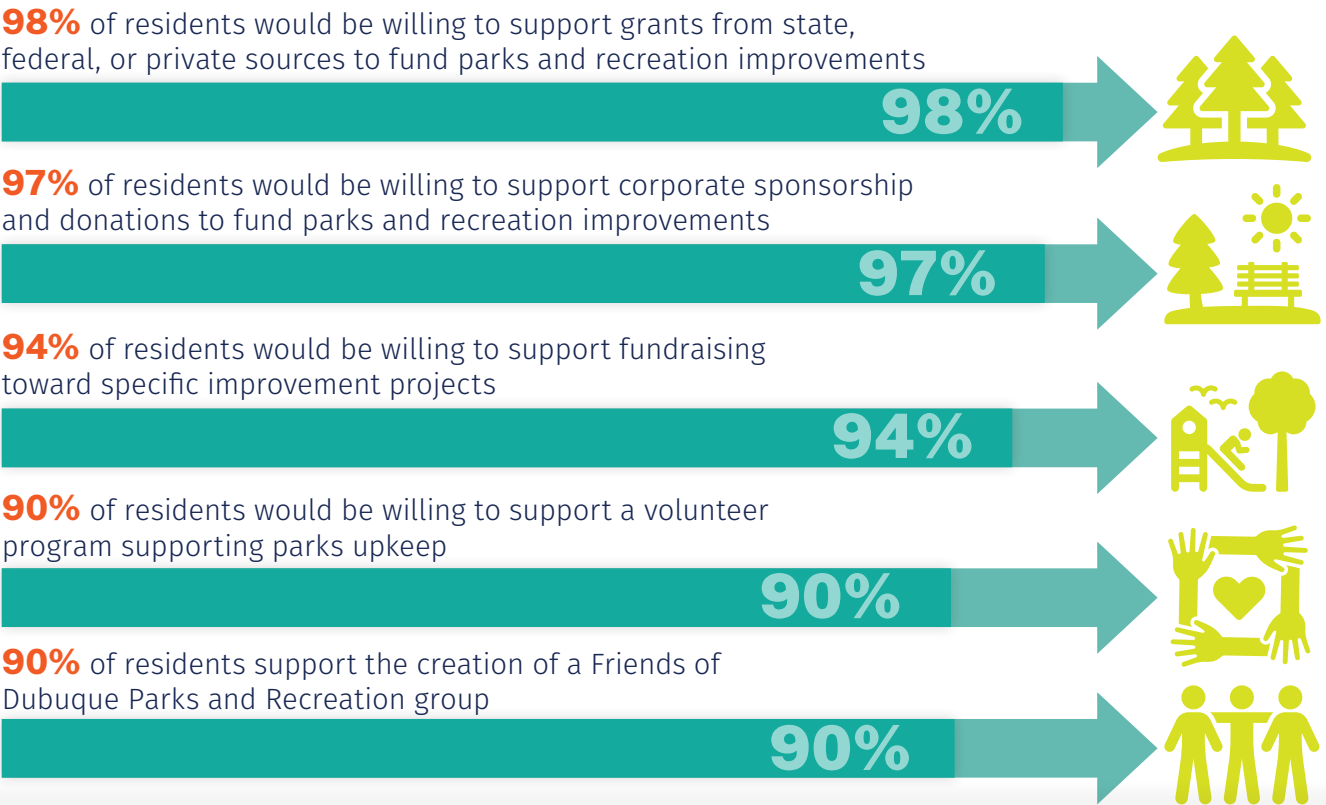
-  **Creating a comprehensive and compelling vision and direction for Parks and Recreation**
-  **Identifying our community’s needs and priorities regarding our city’s facilities, programs, parks, and services**
-  **Addressing land use planning, community needs and desires, environmental management, and resource assessment**
-  **Gaining understanding of current and desired levels of service and facilities in order to demonstrate more equitable services and opportunities**
-  **Identifying, assessing, and prioritizing the deferred maintenance of parks, pools, and facilities**
-  **Evaluating operations and maintenance practices and staffing with an aim to generate long-term sustainability and resilience benefits**

CRAFTING THE STORY

Y(O)ur Story, the city’s Comprehensive Parks and Recreation master plan to date, included a robust community engagement strategy that resulted in thousands of community inputs. The values, goals, and recommendations that will be put forward by this plan will be truly shaped by the community. It is clear the City of Dubuque residents value and recognize the importance of parks and recreation. Dubuque’s strong parks and recreation system, ample opportunities to connect with nature, and riverfront location, sets it apart from neighboring cities and provides the opportunity for Dubuque to be known as a great parks and recreation city. The development of this plan lays the groundwork to reinvigorate the parks system, continue a legacy of great parks and open spaces, recreation, and utilize parks, recreation, and open spaces as a catalyst for growth and economic development.

A CITY OF PARTNERSHIPS

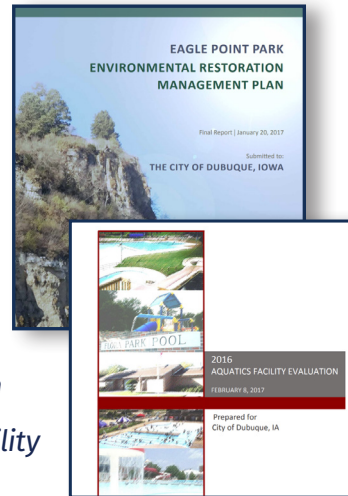
Dubuque delivers its residents exceptional amenities and experiences that exceed expectations given its size and population. This is largely due to long-standing and successful partnerships. For decades, Parks and Recreation has sought out creative ways to deliver recreation opportunities to the community utilizing their limited resources, facilities, and funding to their full extent. To this day, the City of Dubuque and its residents have been greatly benefiting from these partnerships and solution-based decisions. Parks and Recreation leverages numerous partnerships, internally and externally, that allow the City to be good stewards of the land, a good neighbor, beautify the city, host regional-scale events, and utilize indoor facilities for programs. The City has a responsibility to preserve, maintain, and advance these partnerships while also recognizing the limitations of these partnerships and, in some cases, the need for parks and recreation dedicated facilities and additional staff. Parks and Recreation continues to build positive partnerships and seek out others with similar goals. Residents support these existing partnerships and seeking new partnerships to improve the parks and recreation system.



ALIGNMENT WITH KEY PLANNING DOCUMENTS

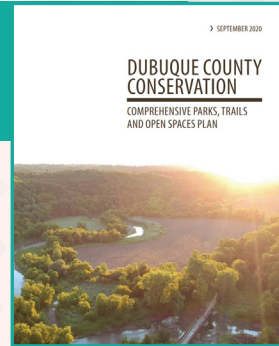
Recent planning efforts by Dubuque and its key partners demonstrate the City's commitment to planning for a successful future. This plan aims to align its values, goals, strategies, and recommendations in the context of the following key planning documents relating to parks and recreation.

- 2017 Eagle Point Park Environmental Restoration Management Plan
- 2016 Aquatics Facility Evaluation



2020 Dubuque County Conservation Comprehensive Parks, Trails, and Open Spaces Plan

The 2020 Dubuque County Conservation Comprehensive Parks, Trails, and Open Spaces Plan aims to enhance the county's natural resources by improving parks, expanding trail networks, and preserving open spaces. The plan emphasizes sustainability, accessibility, and community involvement to ensure the recreational and conservation needs of current and future residents are met.



2024 Historic Millwork District Master Plan Update

The Historic Millwork District Master Plan Update focuses on revitalizing the district by preserving its historic character while promoting mixed-use development, including residential, commercial, and cultural spaces. The updated plan emphasizes environmental resilience, improved infrastructure, and community engagement to create a vibrant, walkable urban neighborhood.



Community Foundation of Greater Dubuque Envision 2030 (In Progress)

Envision with Us!



The Envision 2030 initiative by the Community Foundation of Greater Dubuque is a strategic plan aimed at creating a thriving future for the Dubuque region. It focuses on addressing key areas like education, health, economic opportunity, housing, and community engagement. The goal is to build a resilient, inclusive, and vibrant community by 2030. This initiative involves collaboration with local organizations, businesses, and residents to ensure that the region's development is comprehensive and sustainable.

2016

2017

2020

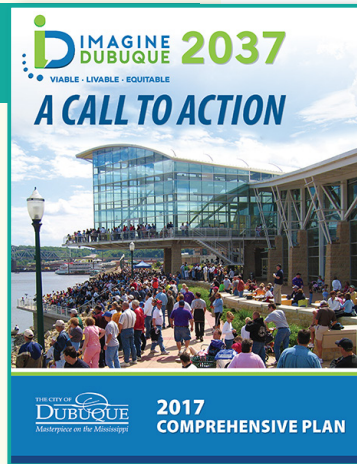
2023

2024

2030

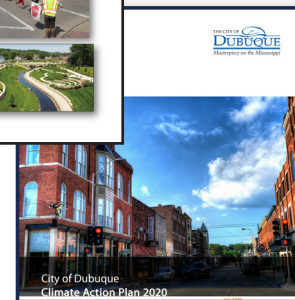
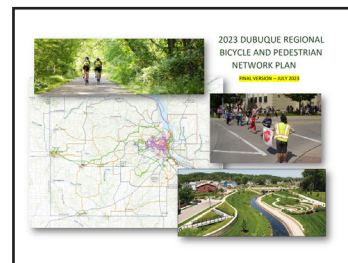
2017 Imagine Dubuque 2037: A Call to Action

Imagine Dubuque 2037: A Call to Action is the city's comprehensive plan focused on sustained growth and development, emphasizing community resilience, economic vitality, and environmental stewardship. The plan involved active community engagement to implement strategies that enhance quality of life, infrastructure, and cultural belonging in Dubuque by 2037.



2023 Dubuque Regional Bicycle and Pedestrian Network Plan

2020 City of Dubuque Climate Action Plan



2024 Schmitt Island Development Plan and 2025 Schmitt Island Sports Complex Feasibility Study

The Schmitt Island Development Plan aims to transform Schmitt Island into a vibrant recreational and cultural destination by enhancing public amenities, improving sports facilities, and promoting economic growth. The plan emphasizes environmental sustainability, accessibility, and community engagement to ensure the project's long-term success and benefit to the local community.



DUBUQUE PARKS AND RECREATION DEPARTMENT

Who We Are...



Mission Statement

Dubuque Parks and Recreation is dedicated to providing safe, accessible, and well-maintained parks, recreation programs, and outdoor spaces. We aim to foster community, promote healthy lifestyles, and preserve natural resources for all people and future generations.



Vision

To create and maintain vibrant community spaces and memorable experiences that improve the lives of all residents through opportunity and connection.

Guiding Principles

Community Belonging and Connection

Our programs, spaces, and services strengthen the bonds between neighbors through shared experiences and ensuring residents feel heard and valued.

Excellence in Care and Maintenance

We take pride in clean, safe, and well-maintained parks and facilities, reflecting our respect for both our system and the people who use it.

Lifelong Enjoyment and Discovery

We create opportunities for recreation, learning, and wellness at every age — from childhood adventures to lifelong passions.

Community Engagement and Ownership

We ensure our improvements are guided by active community participation and transparent processes. We empower residents to take ownership of their public spaces, ensuring our parks remain welcoming, dynamic, and responsive to community needs.

Viability and Innovation

We embrace sustainable and fiscally responsible practices and forward-thinking solutions to meet today's needs without compromising tomorrow's resources.

Active Stewardship

We protect and preserve the natural landscapes and amenities that make our city unique ensuring their beauty and vitality for generations to come.

Pride of Place

We foster a deep sense of local pride — where every playground, trail, and park tells the story of our region's natural heritage and resilient spirit



PARKS AND RECREATION

The Parks and Recreation Department is responsible for a number of diverse offerings and elements. The department supports the following functions:



**Note: Not included in the master plan effort but a part of the Parks and Recreation Department is Grand River Center, Five Flags Civic Center, and ImOn Arena.*

DEMOGRAPHIC AND TRENDS ASSESSMENT

Parks and recreation services will need to strategically invest, develop, and maintain parks and recreation facilities in relation to current and future resident needs and trends.

Recreation Trends

- The activities with the highest participation rates in Dubuque include walking for exercise, hiking, and swimming
- Dubuquers participated in fishing more than the national average. Less active youth and seniors are also most likely to participate in fishing as a means to get active.



PARKS AND RECREATION PRIORITY ASSESSMENT



COMMUNITY ENGAGEMENT SUMMARY

The Y(O)ur Story Dubuque Parks and Recreation Master Plan utilized a comprehensive and widespread process to engage the community, understand needs, and analyze results of community feedback. The Master Plan’s robust outreach process gathered input from staff, stakeholders, user groups, and thousands of residents to obtain diverse and well-rounded feedback on Dubuque Parks and Recreation currently and what opportunities exist for the future. A second phase included sharing a draft of the master plan with the community for feedback.

Focus Groups and User Groups

In addition to touch points with the public via pop-up events, social media, public meetings, website visits, and intercept feedback, groups that provided input include, but are not limited to, the following:

Audubon Society	Dubuque Zoo Boosters
Black Men Coalition	Friends of the Mines of Spain
City Departments	Greater Dubuque Development Corporation
Dream Center	Iowa Department of Natural Resources
Dubuque Arboretum Board	Montessori School
Dubuque Area Land and Water Legacy	Multicultural Family Center
Dubuque Community School District	NAACP
Dubuque County Conservation	Neighborhood Groups
Dubuque Girls Independent League	Program Partners
Dubuque Main Street	Sierra Club
Dubuque Pony League	Tri-State Trail Vision
Dubuque Trees Forever	Youth Sports Groups

*These are not all groups, but represent a cross-section of those who were contacted and participated.

Project Dedicated Website

The interactive, project-dedicated website is yourstorydubuque.com. The website provides updates on the project, events where community members can provide input, and interactive tools that allowed for one or multiple methods of participation. Visitors were encouraged to provide input utilizing the following website tools:

An electronic survey	Help determine priorities with an interactive budgeting tool
Interactive mapping tool	Submit general comments or inquiries
Share your big idea on a public forum	

Statistically Valid Survey

A statistically valid survey is one that uses proper sampling techniques to ensure that the results accurately and proportionally represent the entire City of Dubuque population demographically. Performing this type of survey helps in making informed decisions by providing reliable and unbiased data insights.

The community engagement results of the statistically valid survey and the website survey were incredibly well aligned, meaning the community is unified in the perception of the top capital needs and programming needs for Dubuque Parks and Recreation. This alignment also indicates the website survey results were not highly influenced by one specific special interest group and truly reflect the opinion of the broader community.

Community Outreach

The community engagement process prioritized meeting residents where they are and ensuring multiple ways to participate and provide feedback for the Comprehensive Parks and Recreation Master Plan. The total number of inputs represents the number of touches with the community through website comments, business cards, survey responses, dotocracy votes, and other engagements. The estimated number of participants that provided feedback is 12,598.

Total
Inputs
35,384

Estimated Participants: 12,598





KEY CAPITAL INFRASTRUCTURE AND FUNDING SUPPORT

Dubuque residents recognize the importance of a strong parks and recreation system and largely support dedicating capital funding to improve and increase parks and recreation facilities.

97% of residents support improving existing park infrastructure

96% of residents support improving existing large community parks

94% of residents support improving existing swimming pools

93% of residents support improving existing nature preserves

92% of residents support improving existing paved walking and biking trails

90% of residents support improving existing small neighborhood parks

88% of residents support developing new trails that connect to existing trails

88% of residents support the development of new indoor recreation centers

87% of residents support improving existing youth sports fields

**data source: statistically valid survey*

A detailed inventory and existing conditions assessment has been completed at all parks within the system. A detailed report will be provided as part of the master plan document. Infrastructure and major amenities at many parks in the system were improved in the early 1990s or prior. They have reached or are rapidly approaching the need for lifecycle replacement. Based on the high-priority capital needs, some parks and facilities would require reimagining and new amenities to meet current and future user needs.

High-Priority CAPITAL NEEDS

Statistically-Valid Survey:

1. Aquatic/Pool Facilities
2. Multi-Use Paths and Trails
3. Walking/Running Track
4. Natural Areas and Wildlife Habitat
5. Fitness/Exercise Facilities (Indoor)
6. Recreation/Community Center
7. Pavilions/Picnic Shelters
8. Splash Pads
9. Off-leash Dog Parks
10. Fishing Areas

Website and Intercept Surveys:

1. Aquatic/Pool Facilities
2. Multi-Use Paths and Trails
3. Splash Pads
4. Recreation/Community Center
5. Off-Leash Dog Parks
6. Campsites
7. Playground Equipment (Outdoor)
8. Natural Areas and Wildlife Habitat
9. Multi-Use Fields
10. Walking/Running Track

RECREATION PROGRAM ANALYSIS

The Recreation Program Analysis studied the Department’s recreation program offerings to evaluate the effectiveness of its community recreation facilities and services. The evaluation aimed to answer key questions about the City’s programs and services, such as:

- What are the core programs, and do they align with community desires?
- Does the mix of recreation programs meet community needs?
- What challenges might prevent the City from delivering high-quality programs/services?
- Does the City allocate an appropriate number of resources to recreation?

High-Priority PROGRAM NEEDS

Statistically-Valid Survey:

1. Hobby/Interest Classes
2. Fitness and Wellness Classes
3. Art Programs
4. Free/Low-Cost Special Events
5. Outdoor Fitness Programs
6. Nature/Environmental Education
7. Senior Programs
8. Water Fitness Classes
9. Education Classes/Lectures
10. Adult Sports

Website and Intercept Surveys:

1. Free/Low-Cost Special Events
2. Nature/Environmental Education
3. Learn-to-Swim Programs
4. Youth Sports
5. Art Programs
6. Outdoor Fitness Programs
7. Pickleball Lessons/Leagues
8. Youth Day Camps
9. Adaptive Recreation Programs
10. Adult Sports

ORGANIZATIONAL STRUCTURE ASSESSMENT

The organization structure assessment evaluates the Department’s organizational and management structure, staffing, and financial investment in parks and recreation to assess its effectiveness and efficiency. Some staffing needs that have come from the assessment include:

Increase recreation programming staff to increase capacity for delivering program offerings. These include hobby/interest classes, more diverse programs for all ages., special events, and venue identification for programs.

Create a dedicated marketing role responsible for educating residents and other interested parties on the facilities, programming, and services offered by Dubuque Parks and Recreation. Most residents surveyed do not participate in parks and recreation activities because they do not know what is offered.

The city’s parks assets have evolved and grown at a pace faster than the city has hired additional full-time employees (FTEs) needed to maintain these spaces. Adding staffing and resources for the adequate maintenance of parks will be critical for the system moving forward. Comparative analysis with the National Recreation and Parks Association has been completed.

PLAN RECOMMENDATIONS

Y(O)ur Story’s outreach included more than 35,000 touches with the community through in-person and digital outreach methods. Input received was synthesized into common values and refined to include actionable strategies and recommendations to be implemented by the City of Dubuque. The ideas, goals, and high-level recommendations put forth in this project update are a direct result of a multi-faceted engagement process and a community that takes pride in its city and prioritizes parks and recreation.

Park/Recommendation	Term
Allison-Henderson Park	
Repair cracked sidewalks	Short
Add edging around sand playground pit and ensure ADA access to playground	Short
Ensure proper depth of wood fiber safety surfacing in playgrounds	Short
Replace worn/rusted playground equipment that is becoming safety hazard	Short
Re-stripe rink surface	Short
Add sidewalk routes to playground elements and hockey rink (ADA compliant wherever possible)	Mid
Add concrete pads at benches, picnic tables, BBQs, and other areas that would benefit from being accessible	Mid
Examine opportunities to remove turf and restore/re-vegetate with native plants	Mid
Add shade over playground elements	Long
Implement standard signage at all parks	Long
Avon Park	
Add sidewalk routes to all amenities (ADA compliant wherever possible)	Mid
Replace rusted bike racks, trash receptacles, and picnic tables where necessary	Mid
Repair basketball court asphalt surface and re-stripe	Mid
Examine opportunities to remove turf and restore/re-vegetate with native plants	Mid
Add shade over playground elements	Long
Implement standard signage at all parks	Long
A.Y. McDonald Park	
Replace rusted bike racks, trash receptacles, and picnic tables where necessary	Short
Connect walkways to amenities and assets, including benches and picnic tables (ADA compliant wherever possible)	Mid
Examine opportunities to remove turf and restore/re-vegetate with native plants	Mid

Park/Recommendation	Term
Implement standard signage at all parks	Long
Add shade over playground equipment	Long
Bee Branch Greenway	
Replace rusted bike racks, trash receptacles, and picnic tables where necessary	Short
Bunker Hill Golf Course	
Replace rusted bike racks, trash receptacles, and picnic tables where necessary	Short
Examine opportunities to remove turf and restore/re-vegetate with native plants	Short
Refinish/repair parking lot (cracking, potholes)	Mid
Refinish/repair asphalt cart path (cracking, erosion)	Mid
Burden Park	
Replace rusted bike racks, trash receptacles, and picnic tables where necessary	Short
Update basketball court to true half-court dimensions with smooth surface and striping	Mid
Add sidewalk routes to all amenities (ADA compliant wherever possible)	Mid
Examine opportunities to remove turf and restore/re-vegetate with native plants	Mid
Implement standard signage at all parks	Long
Cancer Survivor Park	
Fix damaged and rusting lighting	Short
Add edger around playground and ensure proper wood fiber play surfacing depth for safety	Short
Create accessible route to pavilion and make necessary updates to aging structure	Mid
Add sidewalk routes to all amenities (ADA compliant wherever possible) and ensure ADA access at playground	Mid
Add level pads under picnic tables to make them accessible	Mid
Add shade over playground elements	Long
Implement standard signage at all parks	Long
Center Grove Open Space	
Consider adding parking and an entrance with signage and information. Many people would not assume that this was accessible land by the public	Short
Add amenities such as seating, pathways, and trash cans	Short
Add trails that would connect to Medical Associates Greenbelt and Welu Park for a more complete trails network/walking loop	Mid
Implement standard signage at all parks	Long

Park/Recommendation	Term
Cleveland Park	
Ensure proper depth of wood fiber safety surfacing in playgrounds	Short
Repair and replace rusted/damaged assets	Short
Repair or replace rusted playground elements that could become a safety hazard	Short
Add sidewalk routes to all amenities and assets (ADA compliant wherever possible)	Mid
Ensure ADA access at playground	Mid
Add concrete pad around BBQ and picnic table for accessibility	Mid
Examine opportunities to remove turf and restore/re-vegetate with native plants	Mid
Implement standard signage at all parks	Long
Add shade over playground elements	Long
Comiskey Park	
Create ongoing maintenance and ranger/visitation schedule to improve safety and cut down on vandalism	Short
Fix parking lot cracking	Short
Implement standard signage at all parks	Long
Add shade over playground elements	Long
Creek Wood Park	
Add signage with parking instructions	Short
Eagle Point Park	
Replace rusted bike racks, trash receptacles, BBQs, drinking fountains, and picnic tables where necessary	Short
Repair/replace rusted play equipment and swings that could become a hazard	Short
Ensure proper depth of wood fiber safety surfacing in playgrounds	Short
Add edging around sand playground area	Short
Repair sidewalk cracking and trip hazards where needed	Short
Continue prairie restoration and reforestation efforts throughout park, as well as eradication of invasive species	Short
Add sidewalk routes to all amenities and assets (ADA compliant wherever possible)	Mid
Add concrete pad around key BBQs and picnic table for accessibility	Mid
Ensure ADA access at playgrounds	Mid
Repair/resurface parking areas where needed (cracking, potholes)	Mid

Park/Recommendation	Term
Add educational signage about history, ecological restoration, and habitat	Mid
Add mapping and wayfinding signage throughout park	Mid
Examine opportunities to remove turf and restore/re-vegetate with native plants	Mid
Refinish tennis courts	Mid
Implement standard signage at all parks	Long
Add shade over playground elements	Long
Update chain link fencing to more aesthetic, lower-height safety view fencing at overlook areas	Long
Continue high-level preservation efforts, including funding and maintenance planning	Long
Examine and implement green infrastructure techniques where feasible to positively impact effects of flow and infiltration of water	Long
Create more dynamic splash pad	Long
Modernize lighting throughout	Long
Eagle Valley Park	
Add signage with parking instructions	Short
Add shade over playground elements	Long
Elmwood Green Park	
No signage, amenities, or parking exist here; examine whether to re-classify this space or add seating and other assets	Short
English Ridge Park	
Add signage with parking information	Short
Falk Park	
Repair/replace rusted play equipment and swings that could become a hazard	Short
Add signage with parking information	Short
Add sidewalk routes to all amenities and assets (ADA compliant wherever possible)	Mid
Update basketball court to true half-court dimensions with smooth surface and striping	Mid
Examine opportunities to remove turf and restore/re-vegetate with native plants	Mid
Implement standard signage at all parks	Long
Add shade over playground elements	Long
Modernize lighting	Long

Park/Recommendation	Term
Flat Iron Park	
Repair/replace rusted play equipment that could become a hazard	Short
Add signage with parking information	Short
Ensure ADA access to playground area	Mid
Add shade over playground elements	Long
Flora Park	
Replace rusted bike racks, trash receptacles, BBQs, drinking fountains, and picnic tables where necessary	Short
Repair skate park cracking	Short
Ensure proper depth of wood fiber safety surfacing in playgrounds	Short
Repair/replace rusted play equipment that could become a hazard	Short
Add handrails where needed at stairs/steps	Short
Repair rusted pool equipment and lighting	Short
Repair pool surfacing and deeper cracks	Short
Repair water slide hazards	Short
Address asphalt potholes, cracking, etc. within parking lot and interior drives	Mid
Add sidewalk routes to all amenities and assets (ADA compliant wherever possible) and create walking loops	Mid
Re-grade and resurface tennis courts	Mid
Resurface baseball/softball fields	Mid
Ensure ADA access to playground and improve sand/fiber separation	Mid
Examine opportunities to remove turf and restore/re-vegetate with native plants	Mid
Add new maintenance yard, building, and restroom	Long
Modernize lighting throughout	Long
Add shade over playground elements	Long
Modernize concessions building and changing/shower rooms at pool	Long
Implement standard signage at all parks	Long
Consider adding dog park	Long
Four Mounds Park	
Implement standard signage at all parks	Long

Park/Recommendation	Term
Gay Park	
Ensure proper depth of wood fiber safety surfacing in playground	Short
Repair/replace rusted play equipment that could become a hazard	Short
Add sidewalk routes to all amenities and assets (ADA compliant wherever possible)	Mid
Ensure ADA access to playground	Mid
Resurface ball field	Mid
Repair/replace playground equipment with vandalism/wear	Mid
Update basketball court to true half-court dimensions with smooth surface and striping	Mid
Examine opportunities to remove turf and restore/re-vegetate with native plants	Mid
Implement standard signage at all parks	Long
Grandview Green Space	
Implement standard signage at all parks	Long
Grant Park	
No signage, amenities, or parking exist here; examine whether to re-classify this space or add seating and other assets	Short
Granger Creek Nature Trail	
Consider adding parking and an entrance with signage and information. Many people would not assume that this was accessible land by the public	Mid
Add amenities such as seating, pathways, and trash cans	Mid
Implement standard signage at all parks	Long
Ham House Historic Site	
Structure by lead mine signage looks to be collapsing and could become a safety issue	Short
Add sidewalk routes to all amenities and assets (ADA compliant wherever possible)	Mid
Implement standard signage at all parks	Long
Continue historic preservation efforts including funding and maintenance	Long
Harvest View Park	
Add playground edging/curbing and ensure ADA access into playground	Short
Add sign with parking information	Short
Add sidewalk routes to all amenities and assets (ADA compliant wherever possible)	Mid

Park/Recommendation	Term
Repair/replace playground platforms that are beginning to peel/rust	Mid
Examine opportunities to remove turf and restore/re-vegetate with native plants	Mid
Add shade over playground elements	Long
Implement standard signage at all parks	Long
Hillcrest Park	
Repair/replace rusted play equipment and swings that are becoming a hazard	Short
Add edging around playground areas	Short
Add sidewalk routes to all amenities and assets (ADA compliant wherever possible)	Mid
Resurface/restripe parking lot	Mid
Add concrete pad with BBQ and picnic table for accessibility	Mid
Examine opportunities to remove turf and restore/re-vegetate with native plants	Mid
Add shade over playground elements	Long
Implement standard signage at all parks	Long
Hilltop Park	
Add signage with parking information	Short
Add edging around playground areas	Short
Ensure proper depth of wood fiber safety surfacing in playground	Short
Repair/replace rusted playground equipment and swings that are becoming a hazard	Short
Update basketball court to true half-court dimensions with smooth surface and striping	Mid
Add sidewalk routes to all amenities and assets (ADA compliant wherever possible)	Mid
Add level concrete pads at BBQ, benches, and picnic tables for accessibility	Mid
Examine opportunities to remove turf and restore/re-vegetate with native plants	Mid
Add shade over playground elements	Long
Implement standard signage at all parks	Long
Jackson Park	
Repair/replace rusted playground equipment and swings that are becoming a hazard	Short
Ensure proper depth of wood fiber safety surfacing in playground	Short
Replace rusted bike racks, trash receptacles, BBQs, drinking fountains, and picnic tables where necessary	Short
Ensure ADA access into playground	Mid

Park/Recommendation	Term
Replace faded/scratched playground equipment	Mid
Connect all assets and amenities to sidewalks (bench, picnic table, and BBQ pads, etc.)	Mid
Community garden beds mostly empty; consider an alternate plan for these or make more of a feature (and accessible)	Mid
Repair fountain or make it a planter/other feature	Long
Add shade over playground elements	Long
Implement standard signage at all parks	Long
Jefferson Park	
Repair/replace rusted playground equipment and swings that are becoming a hazard	Short
Add signage with parking information	Short
Create border between play fiber and sand play areas and around whole playground, and ensure ADA access into playground	Short
Ensure proper depth of wood fiber safety surfacing in playground	Short
Ensure ADA access to park	Mid
Add sidewalk routes to all amenities and assets (ADA compliant wherever possible)	Mid
Examine opportunities to remove turf and restore/re-vegetate with native plants	Mid
Implement standard signage at all parks	Long
Add shade over playground elements	Long
John G Bergfeld Recreation Area	
Ensure proper depth of wood fiber safety surfacing in playground	Short
Repair sidewalk cracking	Short
Paint/repair wood that is chipping/flaking on pavilion	Short
Repair asphalt cracking and spalling in parking lot	Mid
Replace/repair play elements that are starting to rust	Mid
Replace rusting/warping amenities/assets over time	Mid
Implement standard signage at all parks	Long
Add shade over playground elements	Long
Investigate flow of water that is moving through area with benches	Long
Madison Park	
Repair/replace rusted playground equipment that are becoming a hazard	Short
Add sidewalk routes to all amenities and assets (ADA compliant wherever possible)	Mid
Repair/paint aesthetically damaged play equipment	Mid

Park/Recommendation	Term
Examine opportunities to remove turf and restore/re-vegetate with native plants	Mid
Restore and repair pavilion, including stairs, posts, and roof	Long
Implement standard signage at all parks	Long
Add shade over playground elements	Long
Marna Ridge Children's Forest	
Consider adding a clear entrance with signage and parking information. Many people would not assume that this was accessible land by the public	Short
Add amenities such as seating, pathways, and trash cans	Short
Implement standard signage at all parks	Long
Marshall Park/Dubuque Arboretum and Botanical Garden	
Add playground rules/safety signage	Short
Install header curb around playgrounds and keep sand and fiber separate. Ensure ADA access into playgrounds	Short
Ensure proper depth of wood fiber safety surfacing in playgrounds	Short
Add shade over playground areas	Long
Maus Park	
Master plan how to make this park more friendly to the public. For example, it needs parking, clear signage, lighting, seating, and other amenities to make it into a usable park that feels safe.	Short
McAleece Park and Recreation Complex	
Replace rusted bike racks, trash receptacles, BBQs, fencing, drinking fountains, and other assets where necessary	Short
Fix or replace netting to protect spectators from foul balls	Short
Paint over graffiti in skate park	Short
Replace rusted playground equipment that could become a hazard	Short
Add sidewalk routes to all amenities and assets (ADA compliant wherever possible), including all benches and bleachers	Mid
Fix cracking, spalling, erosion, and potholes in asphalt driveways and walkways	Mid
Resurface areas around baseball complex to fix water ponding, uneven surfaces, cracking, and accessibility issues	Mid
Add edging around playground area and ensure proper depth of wood fiber safety surfacing in playgrounds	Mid
Replace worn amenities and assets	Mid

Park/Recommendation	Term
Make sure the concessions building is ADA accessible	Mid
Examine opportunities to remove turf and restore/re-vegetate with native plants	Mid
Add shade over playground elements	Long
Implement standard signage at all parks	Long
Medical Associates Greenbelt	
Consider adding parking and an entrance with signage and information. Many people would not assume that this was accessible land by the public	Short
Add amenities such as seating, pathways, and trash cans	Short
Add trails that would connect to Welu Park and Center Grove Open Space for a more complete trails network/walking loop	Mid
Implement standard signage at all parks	Long
Miller Riverview Park	
Repair/replace rusted playground equipment and swings that are becoming a hazard	Short
Add edging around playground areas and ensure ADA access into playground	Short
When listing pavilions as accessible, make sure picnic tables are ADA friendly	Short
Add sidewalk routes to all amenities and assets (ADA compliant wherever possible)	Mid
Create/modify sites to include more ADA-compliant camping spots	Mid
Implement standard signage at all parks	Long
Modernize lighting	Long
Add shade over playground elements	Long
Mines of Spain	
Replace rusted bike rack and weathered picnic table	Short
Repair cracking on interior drive	Mid
Add sidewalk routes to all amenities and assets (ADA compliant wherever possible)	Mid
Consider adding low swing barrier gate to prevent accidental access to the dangerous railroad area	Mid
Implement standard signage at all parks	Long
Murphy Park	
Replace edging around playground area	Short
Replace rusted BBQ grills, benches, trash cans, and picnic tables that are becoming safety hazards	Short

Park/Recommendation	Term
Replace rusted play equipment that is becoming a hazard	Short
Repair tennis court lighting and missing nets	Short
Ensure proper depth of wood fiber safety surfacing in playgrounds	Short
Add sidewalk routes to all amenities and assets (ADA compliant wherever possible)	Mid
Add accessible routes to buildings and pavilions	Mid
Ensure ADA access into playgrounds	Mid
Repair/refinish tennis courts	Mid
Add accessible concrete pads under picnic tables, benches, and BBQs	Mid
Repair cracking/spalling on interior drives	Mid
Replace aging/faded playground equipment	Mid
Examine opportunities to remove turf and restore/re-vegetate with native plants	Mid
Implement standard signage at all parks	Long
Add shade over playground elements	Long
Modernize lighting	Long
Update restroom building	Long
Oakwood Park	
No signage, amenities, or parking exist here; examine whether to re-classify this space or add seating and other assets	Short
Orange Park	
Replace rusting benches that are a hazard	Short
Ensure wood fiber surfacing in playgrounds meets safe depth requirements; current levels are inadequate, and edging may need to be raised.	Short
Replace rusting play equipment that is becoming a hazard	Short
Ensure ADA access into playground	Short
Connect pathways to bench pads, drinking fountain pads, etc. so that they are accessible	Mid
Add sidewalk routes to all amenities and assets (ADA compliant wherever possible)	Mid
Replace worn play equipment	Mid
Implement standard signage at all parks	Long
Add shade over playground elements	Long

Park/Recommendation	Term
Pet Park	
Add concrete pads beneath picnic tables and benches so that they are accessible	Mid
Add sidewalk routes to all amenities and assets (ADA compliant wherever possible)	Mid
Implement standard signage at all parks	Long
Pinard Park	
Ensure proper depth of wood fiber safety surfacing in playground	Short
Ensure ADA access into playground	Short
Repair/replace rusting play surfaces that could become a hazard	Short
Add signage with parking information	Short
Replace worn playground equipment	Mid
Implement standard signage at all parks	Long
Add shade over playground elements	Long
Port of Dubuque Marina	
Repair parking lot cracking	Mid
Riley Park	
Add signage with parking information	Short
Replace rusted caps on fencing	Short
Ensure proper depth of wood fiber safety surfacing in playground	Short
Replace rusted playground equipment that could become a hazard	Short
Ensure ADA access into playground	Mid
Add sidewalk routes to all amenities and assets (ADA compliant wherever possible)	Mid
Examine opportunities to remove turf and restore/re-vegetate with native plants	Mid
Replace worn playground equipment	Mid
Update basketball court to true half-court dimensions with smooth surface and striping	Mid
Implement standard signage at all parks	Long
Add shade over playground elements	Long

Park/Recommendation	Term
Rocco Buda Jr. Park	
Ensure proper depth of wood fiber safety surfacing in playground	Short
Replace rusted playground equipment that could become a hazard	Short
Add signage with parking information	Short
Add sidewalk routes to all amenities and assets (ADA compliant wherever possible)	Mid
Ensure ADA access into playground	Mid
Add concrete pads under benches to make them accessible	Mid
Replace worn playground equipment	Mid
Revitalize pavilion	Mid
Implement standard signage at all parks	Long
Add shade over playground elements	Long
Rustic Point Park	
This park was still in development/construction during the time of site visits and evaluation	Short
Sister City International Park	
Connect bench pads to walkway for accessibility	Mid
Replace benches that are rusting and will become a hazard	Mid
Replace rusting trash cans and signage posts	Mid
Implement standard signage at all parks	Long
Southern Park	
Add playground edging	Short
Ensure proper depth of wood fiber safety surfacing in playground	Short
Add sidewalk routes to all amenities and assets (ADA compliant wherever possible)	Mid
Ensure ADA access into playground	Mid
Add a bench/seating	Mid
Implement standard signage at all parks	Long
Add shade over playground elements	Long
Sutton Pool	
Repair water slide issues	Short
Repair leaks/rusting equipment/surface cracking	Short
Modernize restroom/shower facilities	Long
Resurface parking lot	Long

Park/Recommendation	Term
Teddy Bear Park	
Ensure proper depth of wood fiber safety surfacing in playground and remove turf growing within it	Short
Replace rusting playground equipment that is becoming a hazard	Short
Add edging around sand play area and remove grass growing within it	Short
Ensure ADA access into playgrounds	Short
Add signage with parking information	Short
Add sidewalk routes to all amenities and assets (ADA compliant wherever possible)	Mid
Ensure ADA access into playground	Mid
Replace worn/faded playground equipment	Mid
Examine opportunities to remove turf and restore/re-vegetate with native plants	Mid
Implement standard signage at all parks	Long
Add shade over playground elements	Long
Usha Park	
Ensure proper depth of wood fiber safety surfacing in playground	Short
Replace playground equipment that is rusted or damaged, impacting safety and usability	Short
Add sidewalk routes to all amenities and assets (ADA compliant wherever possible)	Mid
Ensure ADA access into playground	Mid
Replace worn/faded playground equipment	Mid
Examine opportunities to remove turf and restore/re-vegetate with native plants	Mid
Add bleachers to make cricket field more of a destination	Mid
Implement standard signage at all parks	Long
Add shade over playground elements	Long
Valentine Park	
Resurface asphalt walking trail	Short
Ensure proper depth of wood fiber safety surfacing in playground	Short
Replace rusted playground elements that could become a hazard	Short
Fix tipping/damaged fencing at baseball field that is a hazard	Short
Remove turf growing into baseball dugouts and diamond	Short
Fix dugout benches sinking into earth; consider a concrete pad	Short

Park/Recommendation	Term
Fix upheaving/tipping basketball hoops	Short
Resurface parking lot	Mid
Resurface basketball courts	Mid
Connect playground to sidewalk for accessibility, and ensure ADA ramp access into it	Mid
Add seating around basketball courts and playground areas	Mid
Replace worn/damaged playground elements	Mid
Examine opportunities to remove turf and restore/re-vegetate with native plants	Mid
Implement standard signage at all parks	Long
Add shade over playground elements	Long
Consider baseball field improvements: refreshed diamond surfacing, new pitcher's mound, paved dugouts, foul poles, distance markers, yellow capping on fencing, new benches and bat holders, etc.	Long
Further develop community garden	Long
Valley High Park	
Add edging around playground areas	Short
Replace rusted play equipment that is becoming a hazard	Short
Implement better trash cans	Short
Update basketball court to true half-court dimensions with smooth surface and striping	Mid
Examine opportunities to remove turf and restore/re-vegetate with native plants	Mid
Add sidewalk routes to all amenities and assets (ADA compliant wherever possible)	Mid
Ensure ADA access into playground	Mid
Replace worn/faded playground equipment	Mid
Add concrete pads at benches for accessibility	Mid
Implement standard signage at all parks	Long
Add shade over playground elements	Long
Veterans' Memorial Park	
Replace ripped safety netting at Miracle League Field	Short
Replace missing edging around playground areas	Short
Ensure proper depth of wood fiber safety surfacing in playgrounds	Short
Replace rusted playground equipment that is becoming a hazard and broken pieces	Short

Park/Recommendation	Term
Repair parking lot potholes	Short
Add sidewalk routes to all amenities and assets (ADA compliant wherever possible)	Mid
Replace faded/worn playground equipment	Mid
Add pads under picnic tables and benches to make them accessible	Mid
Ensure ADA access into playground	Mid
Examine opportunities to remove turf and restore/re-vegetate with native plants	Mid
Implement standard signage at all parks	Long
Add shade over playground elements	Long
Waller-Cooper Park	
Ensure proper depth of wood fiber safety surfacing in playgrounds	Short
Fix tipping bench	Short
Replaced damaged playground equipment	Short
Add sidewalk routes to all amenities and assets (ADA compliant wherever possible)	Mid
Replace faded/worn playground equipment	Mid
Add pads under picnic tables, BBQs, and benches to make them accessible	Mid
Ensure ADA access into playground	Mid
Examine opportunities to remove turf and restore/re-vegetate with native plants	Mid
Update basketball court to true half-court dimensions with smooth surface and striping	Mid
Implement standard signage at all parks	Long
Add shade over playground elements	Long
Washington Park	
Replace rusting benches and trash cans that could become a hazard	Short
Implement standard signage at all parks	Long
Welu Park	
Implement standard signage at all parks	Long
Add shade over playground elements	Long
Westbrook Park	
Add shade over playground elements	Long

Park/Recommendation	Term
Ensure proper depth of wood fiber safety surfacing in playgrounds	Short
Fix tipping bench	Short
Replaced damaged playground equipment	Short
Add sidewalk routes to all amenities and assets (ADA compliant wherever possible)	Mid
Replace faded/worn playground equipment	Mid
Add pads under picnic tables, BBQs, and benches to make them accessible	Mid
Ensure ADA access into playground	Mid
Examine opportunities to remove turf and restore/re-vegetate with native plants	Mid
Update basketball court to true half-court dimensions with smooth surface and striping	Mid
Implement standard signage at all parks	Long
Add shade over playground elements	Long
Washington Park	
Replace rusting benches and trash cans that could become a hazard	Short
Implement standard signage at all parks	Long
Welu Park	
Implement standard signage at all parks	Long
Add shade over playground elements	Long
Westbrook Park	
Add shade over playground elements	Long



February 2026



*Scan to view the
full master plan document*